

Boardman to Hemingway Transmission Line Project



Draft Plan of Development
Volume II
Record of Decision Appendix D

Map Set 2B – Idaho Project and Key Environmental Features and Key Mitigation Measures and Reclamation/Monitoring Practices

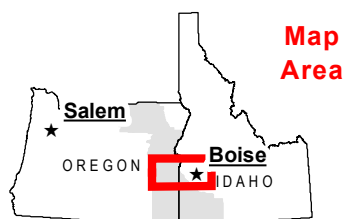
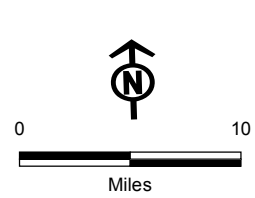
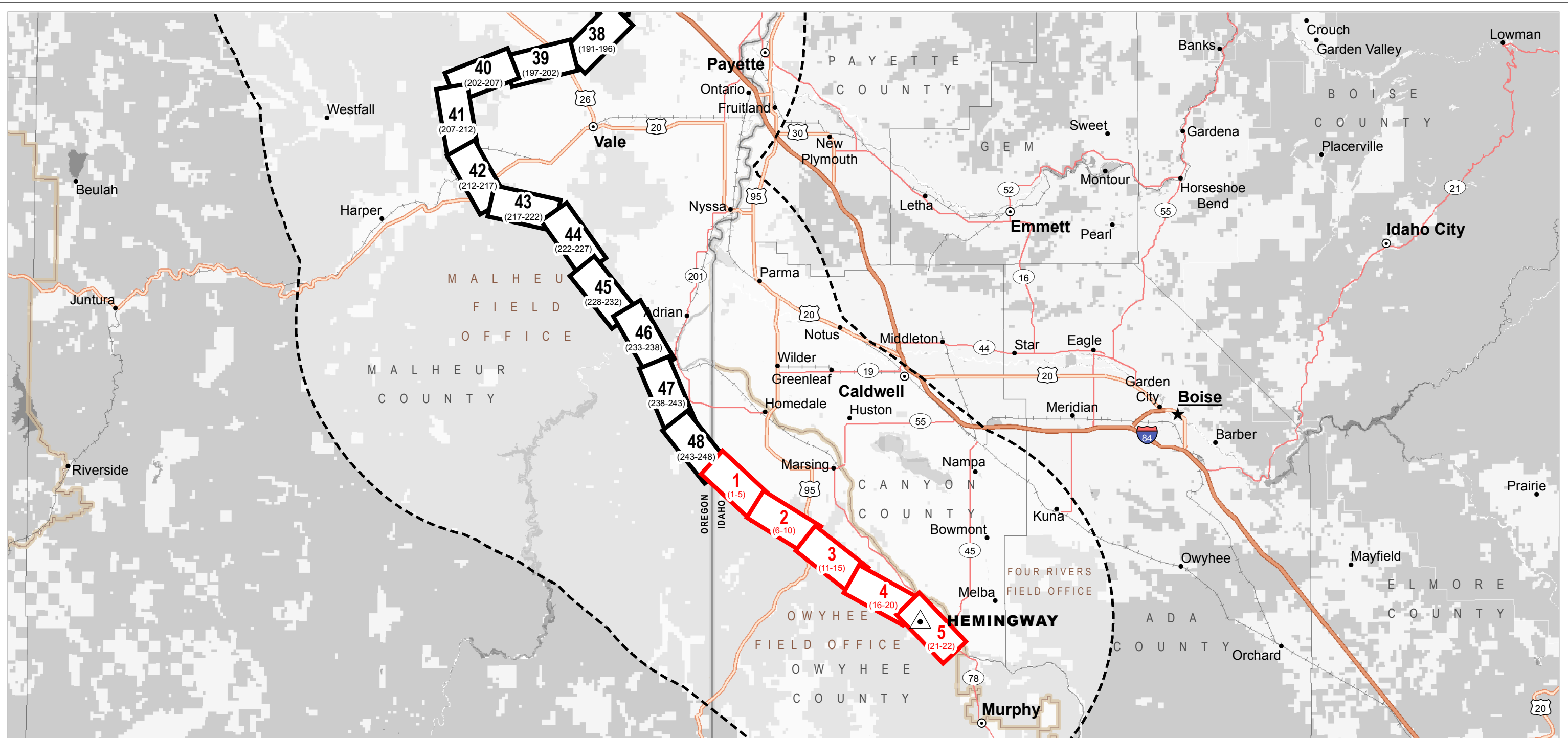
Scale – 1 inch = 400 feet (1:4,800)

Prepared By:

Idaho Power Company
1221 West Idaho Street
Boise, Idaho 83702

U.S. Department of the Interior
Bureau of Land Management
Oregon State Office

June 2017



Map Area

Project Features

- Project Area Boundary
- Map Set 1B Map # (Map Set 2B Maps)
- Map Set 1A Map # (Map Set 2A Maps)
- Existing Station

Other Features

- State Capital
- County Seat
- Other City or Town
- Administrative Boundaries**
- State
- County
- BLM Field Office
- Federal or State Land or Indian Reservation

Roads

- Interstate
- U.S. Highway
- State Highway
- Railroad



Boardman to Hemingway
Transmission Line Project

Source(s): BLM, Esri, Idaho Power Company, NPS, USFS, USGS, Ventyx

Z:\Util\Serv\Boardman_Hemingway\Reports\001_Federal_Applications\POD\NEPA
POD_20161205\Maps\Map Set 2\Map Set 2B Idaho Index.mxd

June 2017

PLAN OF DEVELOPMENT
Map Set 2B - Idaho

Map Index