



## Project Snapshot

Idaho Power is proposing to construct and operate a single circuit 500 kilovolt transmission line – the Boardman to Hemingway Transmission Line Project. The proposed transmission line would begin at the Boardman Power Plant near Boardman, Oregon and end at the Hemingway Substation north of Murphy, Idaho. This project may cross federal, state and private lands in both states.

As proposed by Idaho Power, this project would:

- Reduce constraints on the Northwest's transmission system as customer demand for energy continues to grow.
- Increase transmission capacity.
- Improve system reliability.
- Ensure Idaho Power's ability to provide future service for its customers as well as other utility customers in Idaho and Oregon.

## Project Status

- Idaho Power has initiated a public "Community Advisory Process" or CAP to collaboratively develop recommendations for proposed and alternative transmission line routes (page 5).
- Idaho Power has removed the Northwest Source Station, formerly known as the Sand Hollow Substation, from the project proposal.
- Idaho Power has officially suspended its Integrated Resource Plan review with the Oregon Public Utility Commission (page 4).
- Idaho Power has agreed to a "pause" in the Oregon Energy Facility Siting Council (EFSC) certificate process until they are further along in the CAP (page 4).

## For Project Information

### Project Web site

[www.boardmantohemingway.com](http://www.boardmantohemingway.com)

### Contacts

#### Bureau of Land Management

Lucas Lucero, Federal Project Manager  
c/o Vale District  
100 Oregon St., Vale, OR 97918  
Phone: 702-515-5059  
E-mail: [B2HComments@blm.gov](mailto:B2HComments@blm.gov)

#### Oregon Department of Energy

Adam Bless, Energy Facility Analyst  
625 Marion St. NE, Salem, OR 97301  
Phone: 503-378-8692  
Toll free (OR only): 1-800-221-8035  
E-mail: [Adam.bless@state.or.us](mailto:Adam.bless@state.or.us)

#### Idaho Power Company

Eric Hackett, Project Manager  
P.O. Box 70, Boise, ID 83707  
Phone: 208-388-5712  
E-mail: [B2H@idahopower.com](mailto:B2H@idahopower.com)

This newsletter was developed by the Bureau of Land Management and the Oregon Department of Energy to keep you informed about the proposed Boardman to Hemingway Transmission Line Project.

## Public Scoping Meetings

Public scoping meetings were held in October 2008 by the Bureau of Land Management (BLM) and the Oregon Department of Energy (ODOE) to kick-off the environmental analysis processes for the proposed project. During the meetings, attendees had the opportunity to learn about the proposed project, review maps, provide written comments and discuss the project with the agencies, contractors and Idaho Power representatives.

Following Idaho Power's CAP (page 5), the BLM will conduct additional public scoping meetings to provide information on the project and request input. Public comments received during these meetings will supplement input received following the October 2008 meetings. Information on the dates, times and locations of the meetings will be announced in a project mailing and on the project Web site once they have been scheduled.

## Scoping Comments

Public scoping comments are an important source of information for the BLM, the ODOE and Idaho Power. Scoping comments guide the scope and content of the environmental review processes in the following ways:

- The BLM uses scoping comments to develop route alternatives, determine appropriate mitigation to reduce potential effects on resources in the study area and focus the environmental analysis on issues of concern.
- The ODOE reviews the comments to identify the issues that it will require Idaho Power to address in its Application for a Site Certificate.
- Idaho Power will use the scoping comments as it develops recommendations for proposed and alternative routes through the CAP.

The public scoping comments received this past fall and winter were summarized in two documents: a Project Order by the ODOE and a Scoping Report by the BLM. The Project Order is available on the project Web site. The Scoping Report will be available on the project Web site after May 15. Both documents will be available for viewing at locations across Oregon and Idaho after May 15 (page 5).



*Public scoping meeting in Ontario, Oregon*

---

### October 2008 scoping facts:

- Meetings held in six locations in Oregon and Idaho
  - Over 300 meeting attendees
  - Over 1,000 public scoping comments received
- 

## Public Involvement

### *How can you be involved?*

Public participation is essential to thorough agency analysis and decision-making. The project includes multiple opportunities for you to participate by submitting comments, attending public meetings and keeping informed through the project Web site and newsletters. The BLM and the ODOE will issue public notices about upcoming public participation opportunities and future comment periods as they are scheduled.

We encourage your participation and welcome your comments and questions about the project. Comments are accepted at any time; however, formal comment periods provide opportunities for the public to provide input prior to key decision-making stages. There is no formal BLM or EFSC comment period being held at this time.

## Environmental Review



Two separate, concurrent environmental analyses must be conducted for the proposed project to meet both state and federal requirements. The BLM is the lead agency for the federal analysis process under the National Environmental Policy Act (NEPA) and the ODOE is the lead agency for the Oregon state analysis process under the Oregon EFSC Site Certificate process.

NEPA provides a process for federal agencies to study and disclose the potential effects of a proposed project. EFSC requires that the project meet a complete set of pass-fail standards that cover environmental and land use impacts. More information describing the environmental analyses being conducted by the BLM and the ODOE is provided below and on page 4.



## Bureau of Land Management National Environmental Policy Act Process

### NEPA Process

In accordance with the NEPA, an environmental analysis process is being conducted to evaluate potential effects resulting from the proposed project. The NEPA process is required because the project proposes to cross federally-managed lands. The information resulting from the NEPA study will be included in an environmental impact statement (EIS). The EIS is a detailed study of the project's effects on the environment and is a highly effective decision-making tool.

NEPA requires that a range of alternatives be examined so that reasonable options for the project can be studied. Following Idaho Power's CAP, the BLM will develop alternative routes after comments from the public, agencies and Tribes are given full consideration and data on existing study area conditions have been collected and analyzed. The BLM and the U.S. Forest Service (USFS) will use the EIS analysis to make separate final decisions to approve or deny the project on BLM- and USFS-administered federal lands.

The BLM is required to also consider the impacts on the private lands that are adjacent to the federal lands, but the BLM does not issue permits on private land. The BLM and the USFS do not have the authority to approve or deny any portion of the project on private lands.

To learn more about the NEPA process, visit [http://ceq.hss.doe.gov/nepa/Citizens\\_Guide\\_Dec07.pdf](http://ceq.hss.doe.gov/nepa/Citizens_Guide_Dec07.pdf) or contact Lucas Lucero, BLM Federal Project Manager.

### Thanks for your help!



Many people have provided input through their local county planners, county commissioners and resource agencies. The BLM and the ODOE welcome this method of participation and appreciate your help in understanding local issues.

## EFSC Certificate Process

In the state of Oregon, the proposed project is undergoing the ODOE-EFSC process. In this process, Idaho Power is applying to the state of Oregon to build the Boardman to Hemingway Transmission Line Project.

The EFSC process consolidates regulations of Oregon state and local agencies. The EFSC will approve the project's application only if it meets the state standards for land use, safety and environmental impact, which apply on both public and private lands. The EFSC standards only apply in Oregon and do not apply in Idaho. However, Idaho residents are welcome to participate in the EFSC process. The EFSC is performing its review in parallel with the BLM, whose decision is specific to the federal lands it manages.

In April 2009, Idaho Power requested a "pause" in the Oregon EFSC process while proposed and alternative routes are developed through the CAP. This "pause" occurs during a natural slowdown in the process while the ODOE awaits the filing of the Application for a Site Certificate. In the interim, the ODOE will be working with communities to learn more about the area and to provide information about the EFSC process.

To learn more about Oregon's energy facility siting process, visit [www.oregon.gov/ENERGY/SITING/process.shtml](http://www.oregon.gov/ENERGY/SITING/process.shtml) or contact Adam Bless, ODOE Energy Facility Analyst.

## Project Order

The ODOE released its Project Order on January 26, 2009. The Project Order identifies applicable regulations and summarizes concerns by the public and state resource agencies. The Project Order also provides guidance to Idaho Power as they select their route and write the Application for a Site Certificate. Specifically, the Project Order recommends Idaho Power consider changing its routes per suggestions from the public and the counties. The Project Order is not a decision-making document and does not approve or deny the project.

Should new issues or information become known to the ODOE, the Project Order can be amended. The Project Order is available on the project Web site and at the public viewing locations listed in this newsletter (page 5).

### EFSC meeting to be held May 14

The EFSC will hold a public meeting on Thursday, May 14, 2009 in Baker City to:

- Brief the EFSC members on the status of the project.
- Provide an opportunity for the public to speak directly to the EFSC members.

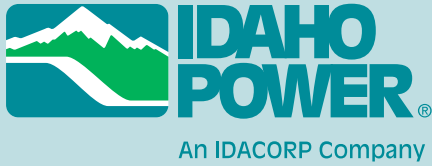
No actions will be taken and no decisions will be made at this meeting. The meeting time and location will be announced on the project Web site.

## Oregon Public Utility Commission

To determine if the project meets Oregon's Need for Facility Standard, the EFSC relies on the Integrated Resource Plan (IRP) review led by the Oregon Public Utility Commission (OPUC). An IRP is a comprehensive plan designed to meet future demands for electricity while balancing reliability, environmental concerns, efficiency and low cost.

In February 2009, the OPUC received Idaho Power's addendum to include the Boardman to Hemingway transmission line in its IRP. As part of its review process, the OPUC held public hearings on the IRP addendum in March 2009. In April 2009, Idaho Power officially suspended its IRP review with the OPUC in response to concerns about the timing of this addendum with the upcoming 2009 IRP.

For more information on the IRP process and need determination, visit [www.puc.state.or.us](http://www.puc.state.or.us) or contact Matt Muldoon at 503-378-6164 or [Matt.Muldoon@state.or.us](mailto:Matt.Muldoon@state.or.us).



## Idaho Power's Community Advisory Process

Following review of public comments, Idaho Power initiated a collaborative effort called the Community Advisory Process (CAP) to recommend proposed and alternative routes for the project. Idaho Power will work with the public, resource and regulatory agencies, government officials and other interested groups and organizations in Idaho and Oregon during this process.

Upon completion of the CAP, Idaho Power will submit revised applications to the BLM and the USFS and update the ODOE with the proposed and alternative routes developed during the CAP for inclusion in their review and analysis.

More information about Idaho Power's CAP is available on the project Web site.

### How will the BLM and the ODOE be involved in Idaho Power's Community Advisory Process?

The BLM and the ODOE will attend CAP-related meetings, as needed. The agencies will be available during the meetings to:

- Provide information about state and federal resource issues.
- Explain their review processes in more detail.
- Clarify the state and federal statutes and rules that the project must meet.
- Answer questions from CAP participants.

## Public Viewing Locations

The Scoping Report and Project Order will be available for viewing at the following locations after May 15:

### Idaho

- BLM-Boise District Office, Boise
- Boise Public Library, Boise
- Canyon County Development Services Department, Caldwell
- BLM-Owyhee Field Office, Marsing
- Owyhee County Planning Department, Murphy
- Nampa Public Library, Nampa
- Payette County Planning Department, Payette
- Washington County Planning Department, Weiser

### Oregon

- Baker County Planning Department, Baker City
- Baker County Library, Baker City
- BLM-Baker Field Office, Baker City
- Boardman City Library, Boardman
- Morrow County Planning Department, Irrigon
- La Grande Public Library, La Grande
- Union County Planning Department, La Grande
- Pendleton Public Library, Pendleton
- USFS-Wallowa Whitman National Forest Office, La Grande
- Umatilla County Planning Department, Pendleton
- Ontario Library, Ontario
- BLM-Vale District Office, Vale
- Malheur County Planning Department, Vale
- Oregon Department of Energy, Salem



**Bureau of Land Management**  
 Lucas Lucero, Federal Project Manager  
 c/o Vale District Office  
 100 Oregon St.  
 Vale, OR 97918

B2H

**Announcing:**

Public scoping summaries available  
 ODOE-EFSC public meeting - May 14

Boardman to Hemingway  
 Transmission Line Project

The newsletter is printed on paper using 40% post consumer waste.

B2H

**Boardman to Hemingway  
 NEWSWIRE**



OREGON  
 DEPARTMENT OF  
 ENERGY

Boardman to Hemingway Transmission Line Project

**Project Overview**

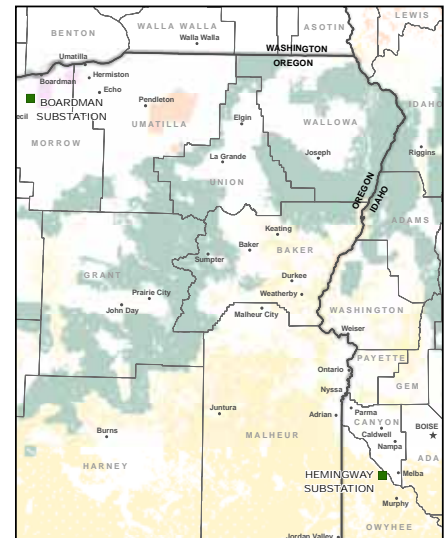
Idaho Power Company has proposed to build and operate a transmission line from Boardman, Oregon to southwest Idaho. The Boardman to Hemingway Transmission Line Project may cross federal, state and private lands in both states.

**Get the Facts: [www.boardmantohemingway.com](http://www.boardmantohemingway.com)**

For up-to-date information about the project, answers to commonly asked questions and information on upcoming public involvement opportunities, visit the official project Web site.

**Thank You**

Thank you for your participation in the analysis of the proposed Boardman to Hemingway Transmission Line Project. Updated project information will be provided in future newsletters. To be removed from the project mailing list, please e-mail [B2HComments@blm.gov](mailto:B2HComments@blm.gov).



*Project area*