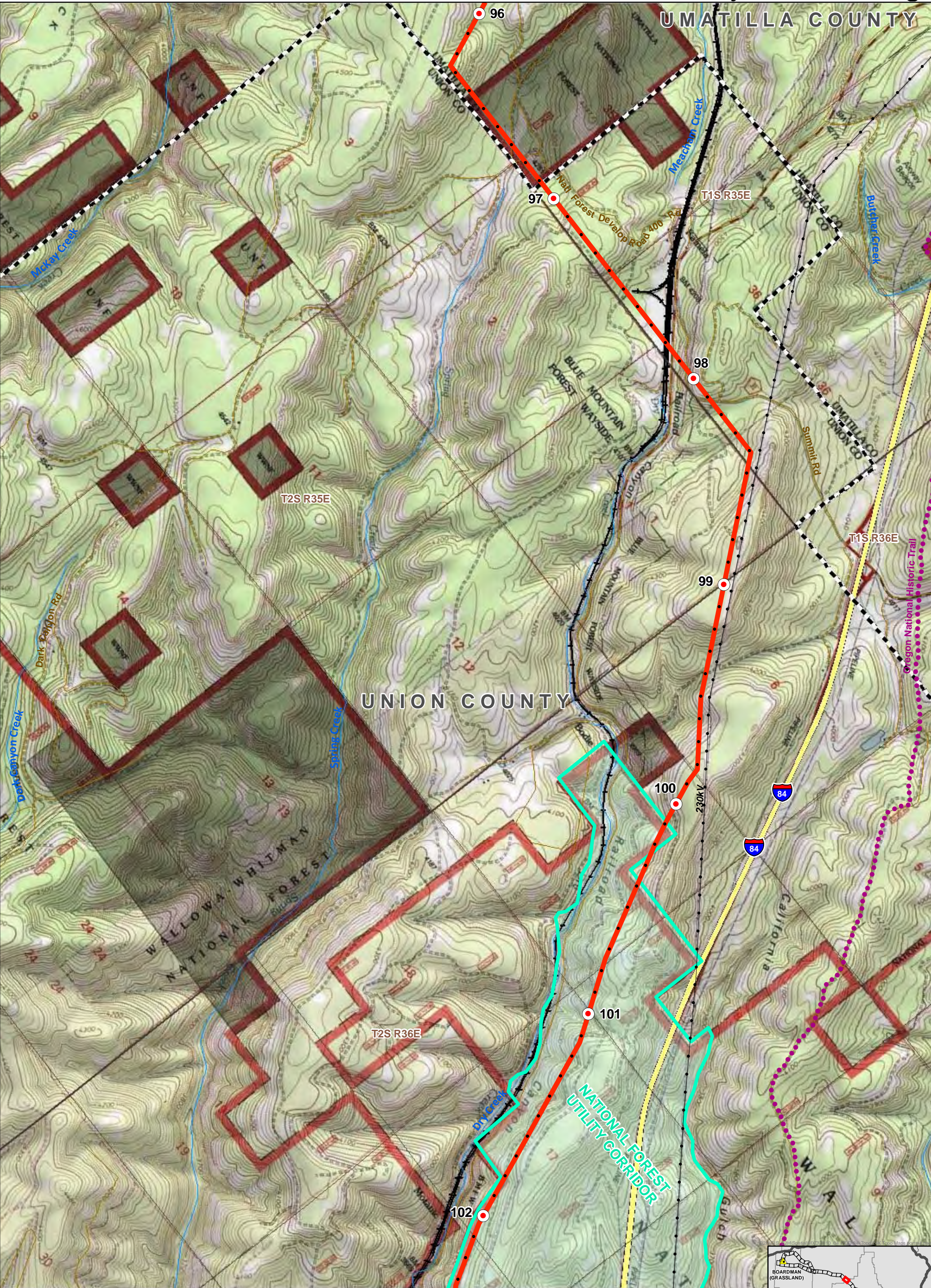


UMATILLA COUNTY

UNION COUNTY



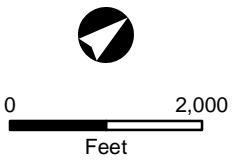
DETAILED ROUTE MAP
1:24K TOPOGRAPHIC MAP

Proposed Route

BOARDMAN TO HEMINGWAY 500kV
TRANSMISSION LINE PROJECT
OREGON-IDAHO

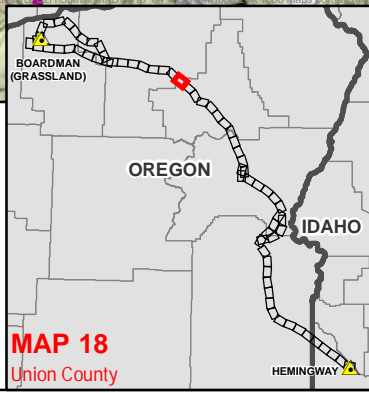
APRIL 2010

APPENDIX A
MAP 18 OF 70



- Substation
- Existing Transmission Line
- Mile Marker
- Tenth Mile Marker
- Proposed Route
- Alternative

- State Boundary
- County Boundary
- River/Stream
- Township/Range Boundary
- Section Line
- County Road



MAP 18
Union County