



The newsletter is printed on paper using 40% post consumer waste.



### What's Inside

- The upcoming release of BLM's DEIS
- A newly proposed route variation in Morrow County
- Idaho Power's EFSC Application for Site Certificate
- Important milestones for the federal and state processes



Stay up-to-date about the project by visiting the [www.boardmantohemingway.com](http://www.boardmantohemingway.com) for the latest maps, future comment periods and public meeting dates, key documents and more!

### Project Overview

The Boardman to Hemingway Transmission Line (B2H) Project is a proposal by Idaho Power Company (Idaho Power) to design, construct, operate and maintain a new single-circuit, 500 kilovolt (kV) power line between Boardman, Oregon and Melba, Idaho. The proposed route is approximately 300 miles long and crosses federal, state and private lands in six counties in Oregon and Idaho. The B2H Project would provide additional capacity for exchanging energy between the Northwest and the Intermountain West regions, depending on which region is experiencing the highest demand. The project is advancing through two separate, but simultaneous review processes:

- Federal process under the National Environmental Policy Act (NEPA) led by the Bureau of Land Management (BLM) to obtain a Right of Way Grant from BLM and Special Use Permits from the U.S. Forest Service (USFS) and U.S. Bureau of Reclamation (BOR) for the portion of the project crossing federal lands
- State process administered by the Oregon Department of Energy (ODOE) to obtain a Site Certificate from the Oregon Energy Facility Siting Council (EFSC)

### What's New?

- The BLM expects to release the draft Environmental Impact Statement (DEIS) in fall 2014. Idaho Power requested the federal agencies consider a route variation in the DEIS, in response to community feedback on the project. This variation of the Longhorn Alternative, called the Longhorn Variation, runs on the east side of Bombing Range Road in Morrow County. See inside for details and a map of the variation.
- The B2H project team recently briefed cooperating agencies and BLM, BOR, and USFS managers on the status of the DEIS and recommendations for the environmentally and agency preferred alternatives for the route. The agency preferred alternative will be identified in the DEIS.



### For Project Information

#### Project Website

[www.boardmantohemingway.com](http://www.boardmantohemingway.com)

#### Contacts

##### Bureau of Land Management

Tamara Gertsch  
National Project Manager  
Phone: 307-775-6115

##### Oregon Department of Energy

Sue Oliver  
Senior Energy Facility Analyst  
Phone: 541-567-3840 Ext. 225

##### B2H Project

P.O. Box 655  
Vale, OR 97918  
Fax: 888-251-3129  
E-mail: [comment@boardmantohemingway.com](mailto:comment@boardmantohemingway.com)

This newsletter was developed by the Bureau of Land Management, U.S. Forest Service and the Oregon Department of Energy to keep you informed about the proposed Boardman to Hemingway Transmission Line Project.



## Federal Process (NEPA)

Following the publication of the DEIS in the Federal Register, the public will have 90 days to submit comments on the DEIS. Comments may either address the project overall or provide specific feedback on routing, environmental analysis, or other issues.

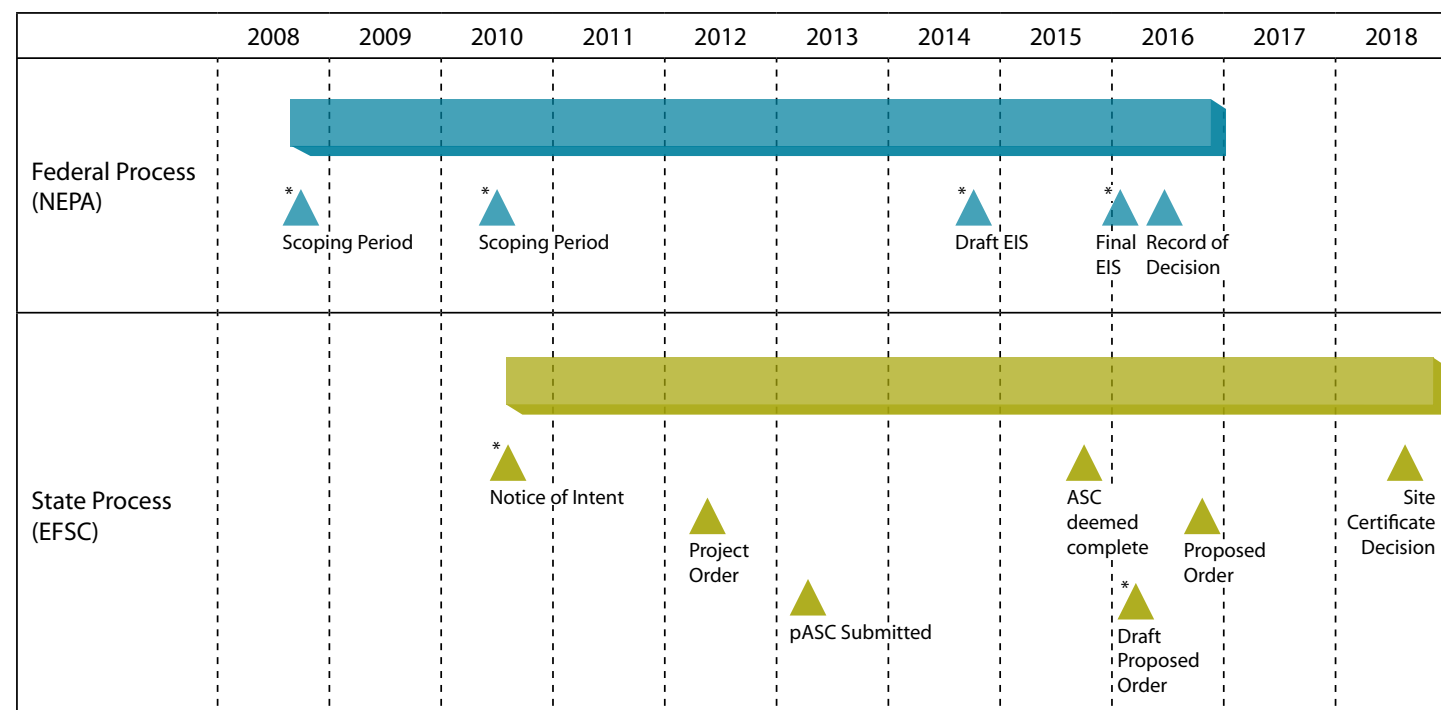
The BLM expects to host six public meetings along the project route to provide communities in the area time to ask questions, review maps, and submit public comments. Please reference the B2H website ([www.boardmantohemingway.com](http://www.boardmantohemingway.com)) for meeting locations and schedule as the DEIS release date approaches. Tentative meeting locations include:

- Boardman, Oregon
- La Grande, Oregon
- Baker City, Oregon
- Pilot Rock, Oregon
- Ontario, Oregon
- Marsing, Idaho

All public comments must either be submitted online, in-person during the meetings, or postmarked by the end of the comment period in order to be considered in the Final EIS.

## Project Milestones

In addition to the release of the DEIS, there are a number of upcoming milestones for both the federal and state processes. The graphic below illustrates these milestones and when they are expected to occur.



\*Formal opportunities for public participation

## State Process (Oregon EFSC)

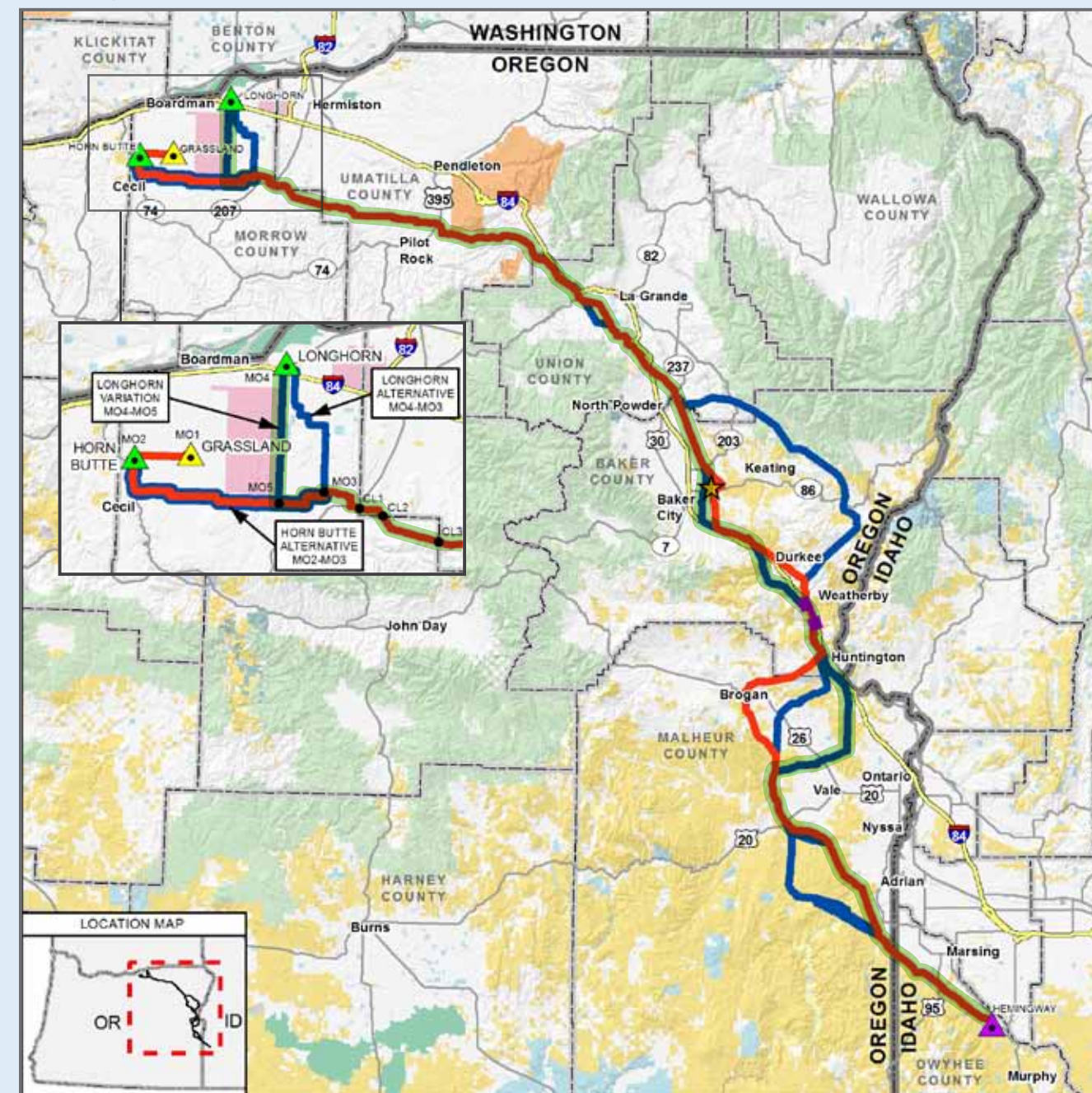
In early 2013, Idaho Power submitted a Preliminary Application for Site Certificate to EFSC through ODOE. Because there have been numerous changes to the project design, including route refinements, Idaho Power intends to submit an application amendment to ODOE in spring 2015.

ODOE is not expected to make a determination on the completeness of the application until fall 2015. ODOE will provide public notice and host information meetings along the route after deeming the application complete and final.

ODOE expects to issue the Draft Proposed Order (DPO) for public review and comment in early 2016. The DPO will include ODOE's recommendation to EFSC on whether to grant Idaho Power a site certificate for the proposed project, and ODOE's recommended site certificate conditions. When the DPO is issued EFSC will hold a series of formal public hearings to hear comments on the application and the DPO.

Please review the information at [www.boardmantohemingway.com](http://www.boardmantohemingway.com) (ODOE-EFSC) to learn more about the next steps in the Oregon siting process.

## Project Map



### Longhorn Variation

In May 2013, Idaho Power formally asked the federal agencies conducting the NEPA process to include the Longhorn Variation in the DEIS. This variation of the Longhorn Alternative runs along the east side of Bombing Range Road in Morrow County (see map). At this time, the Longhorn Variation appears to be the likely environmentally preferred alternative. BLM's analysis of routes and its preferred alternative will be documented in the DEIS.